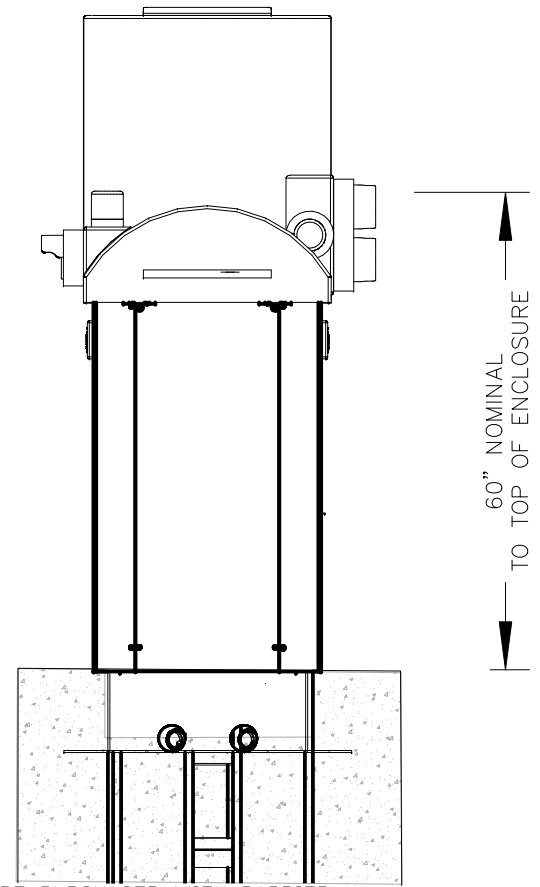
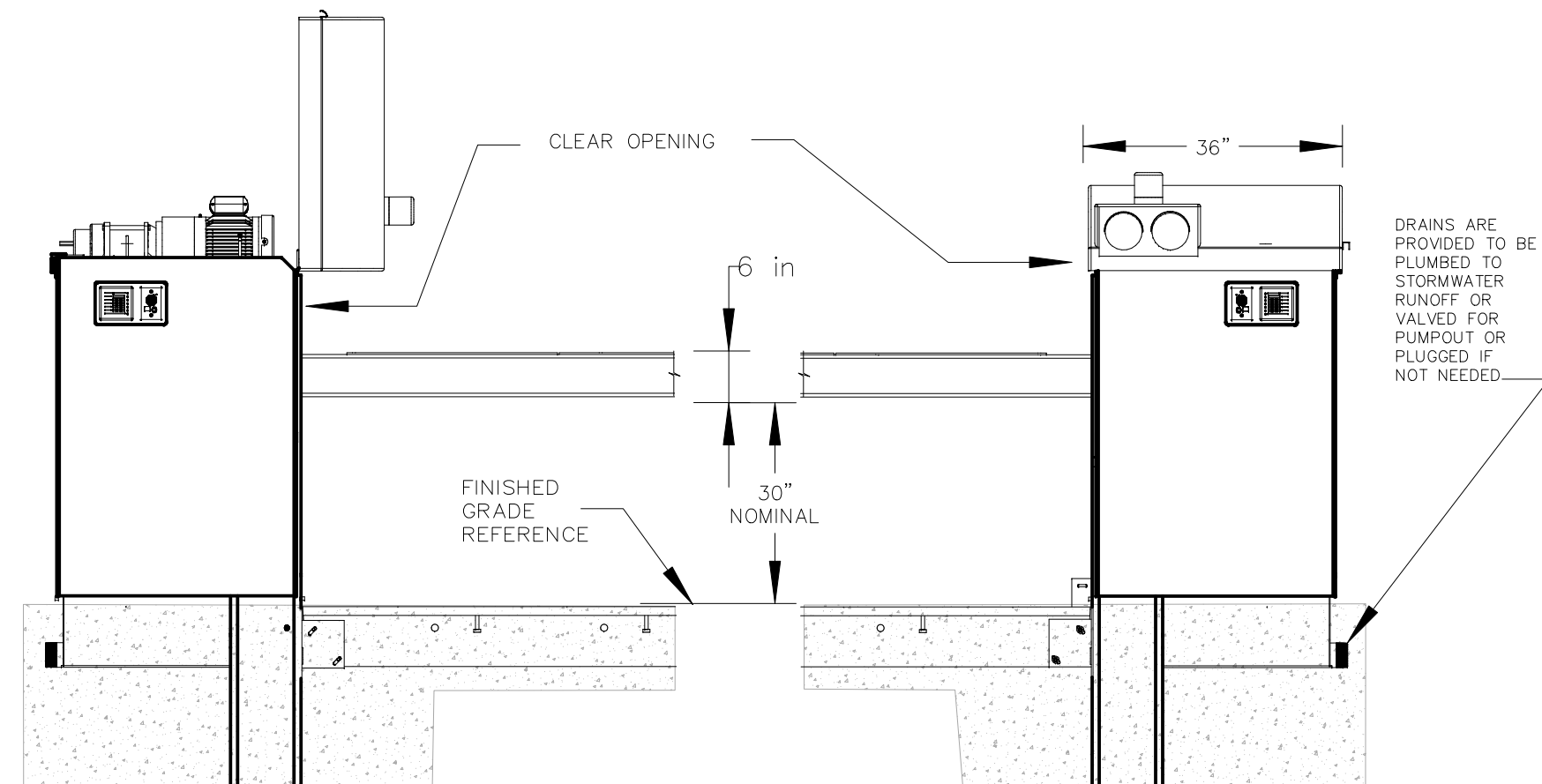
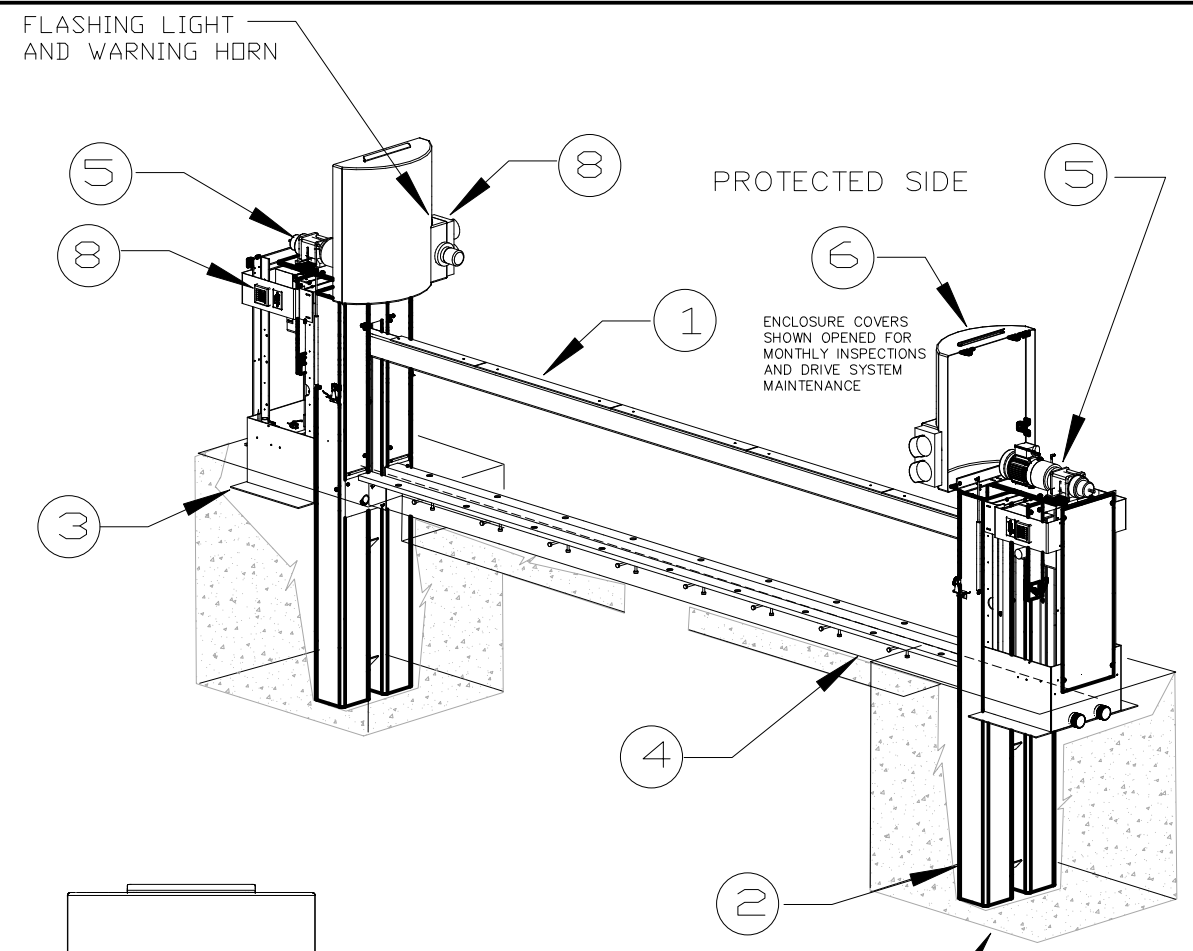
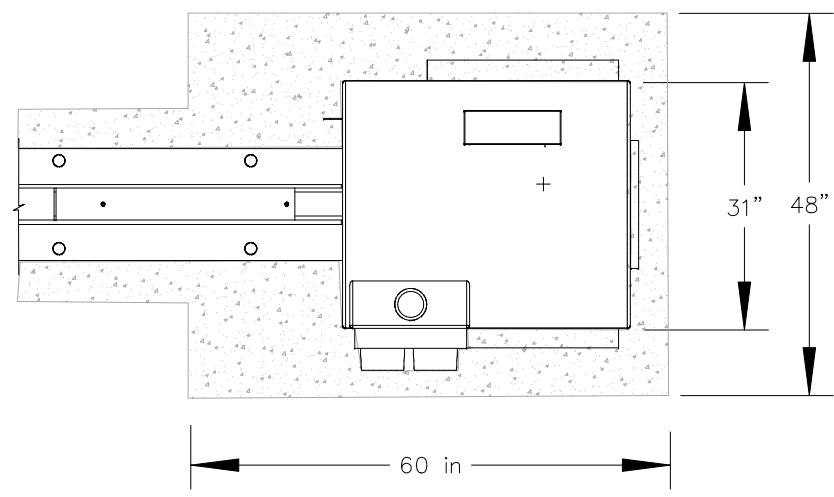
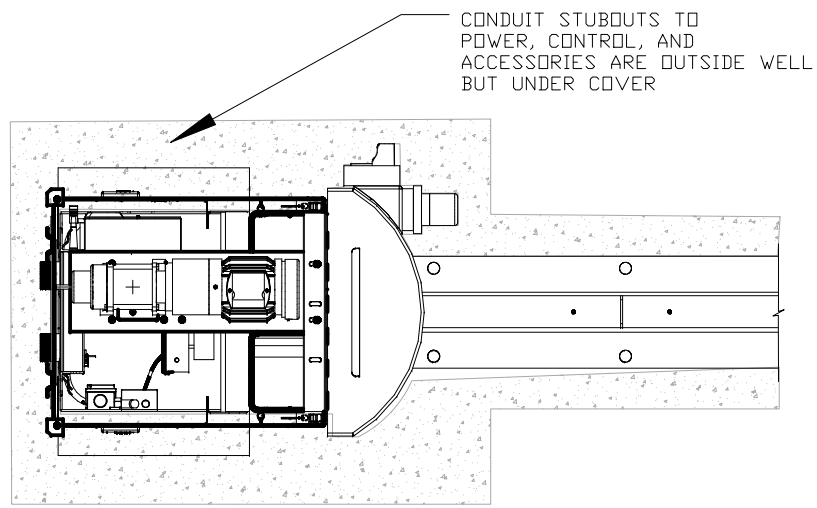


PART	QTY	DESCRIPTION
1	1	CRASH BEAM ASSEMBLY
2	1	RIGHT OPERATING UNIT AND SUPERPOST ASSEMBLY
3	1	LEFT OPERATING UNIT AND SUPERPOST ASSEMBLY
4	1	BEAM CENTER WELL ASSEMBLY

PART	QTY	DESCRIPTION
5	2	OPERATOR ASSEMBLY
6	2	OPERATOR UNIT ENCLOSURE ASSEMBLY
7	1	CONTROL SYSTEM
8	AR	ACCESSORIES - AS REQUIRED



CONCRETE ANCHOR
48" X 60" X 60" DEEP
WITH REINFORCING BAR CAGES AND
CENTER BEAM 24" WIDE X 12" DEEP
WITH REINFORCING BAR

NOTE: THE FOLLOWING ITEMS ARE ACCESSORIES WHICH MAY BE PURCHASED AS REQUIRED. THESE MAY NOT BE ON THE SPECIFIC BARRIER BEING INSTALLED BUT MAY BE PURCHASED WITH BARRIER: TRAFFIC CONTROL LIGHTS, BEAM WELL HEATER, ELECTRIC DISCONNECT, CARD READERS, INTERCOMS, DUAL OBSTRUCTION DETECTION SYSTEMS, HAND HELD REMOTE CONTROLS, TREADPLATES, ET AL

PREPARED BY	COX	01MAR19
CHECKED BY	NAME	xxx
DISCIPL APPR	NAME	xxx
INTERFACE CK		
BY	CK	APPR
DATE	REVISION	CLIENT APPR



JOB NAME
HORIZONTAL BEAM BARRIER
WITH OPERATOR, CONTROLS
AND ACCESSORIES

DEEP MOUNT
CSP-DF 1.4.1.2

SHEET TITLE
PRODUCT
ILLUSTRATION

JOB NO	DATE
1807-3	01MAR19
SCALE	REV NO
NONE	0
	DWG NO
	SI002