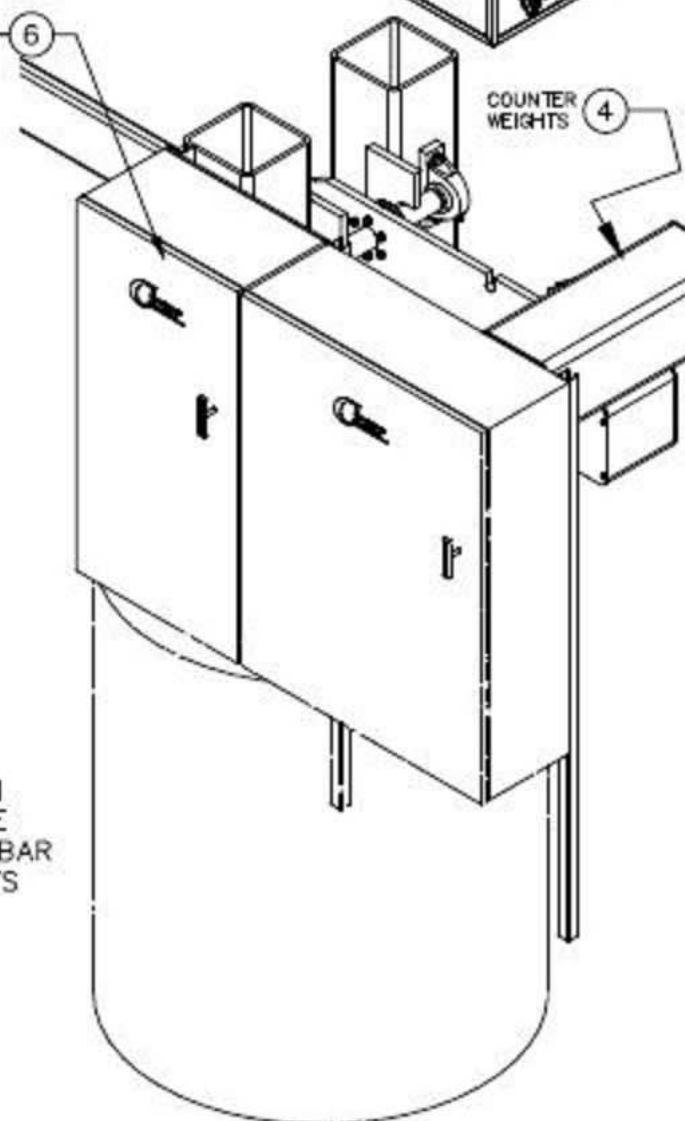
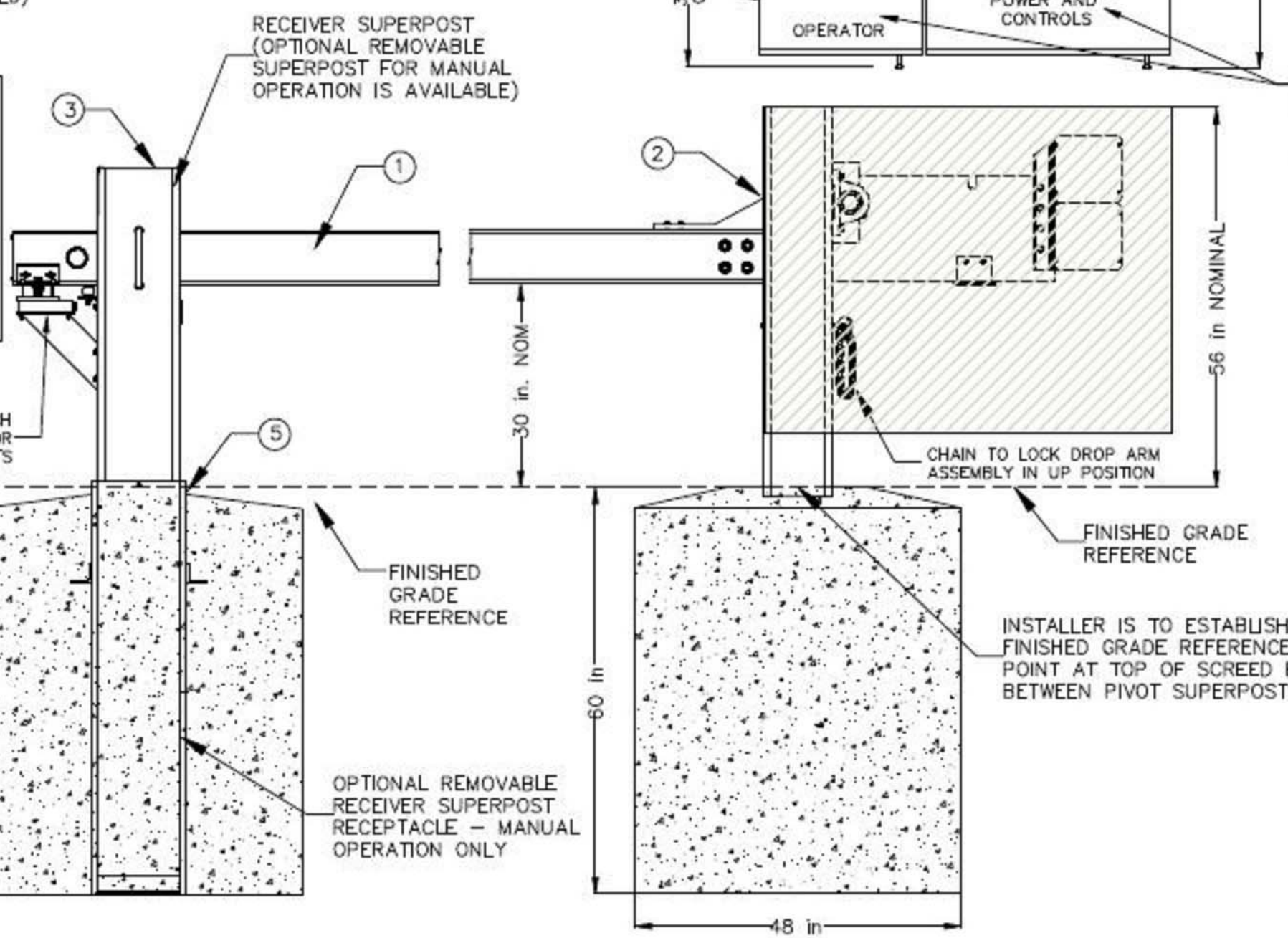
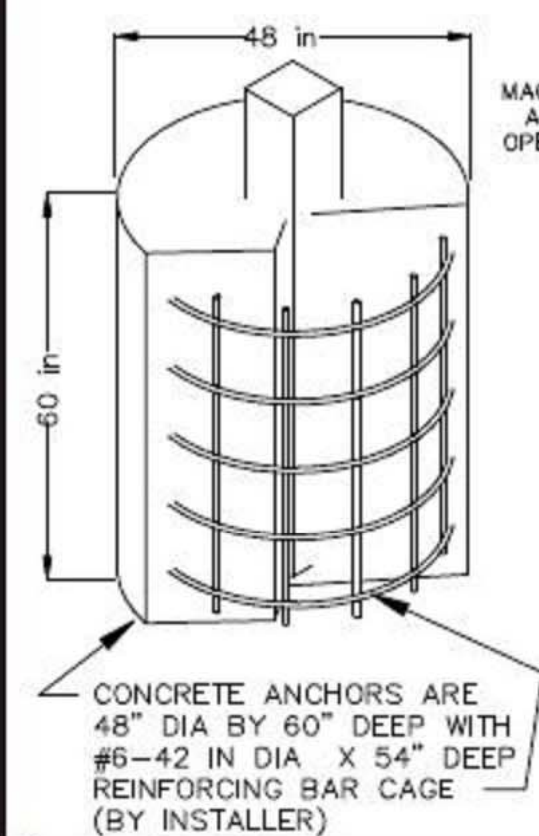
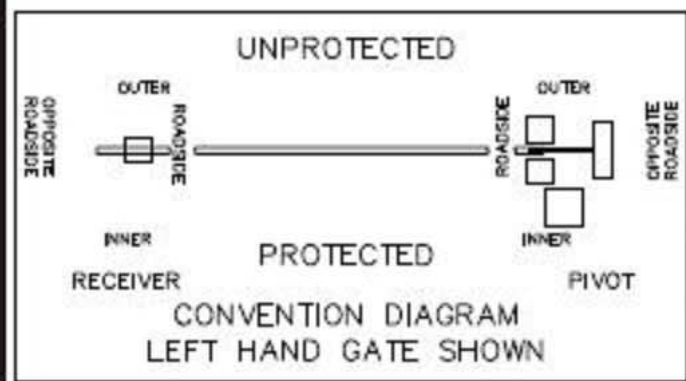
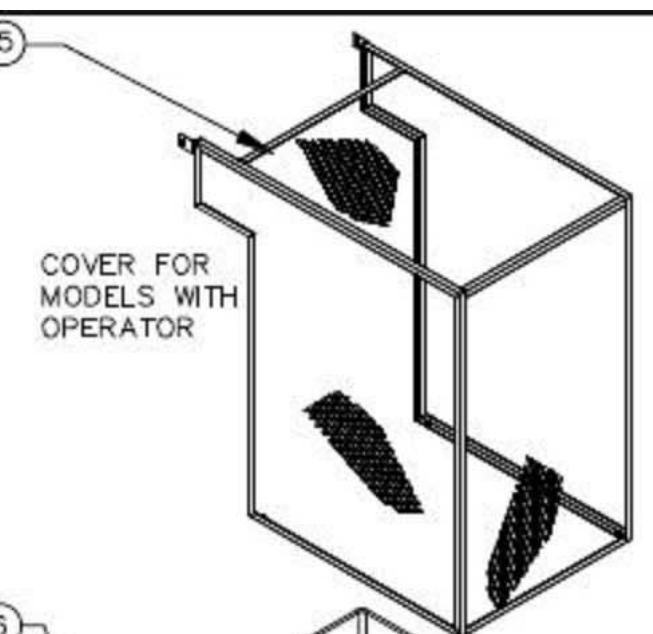
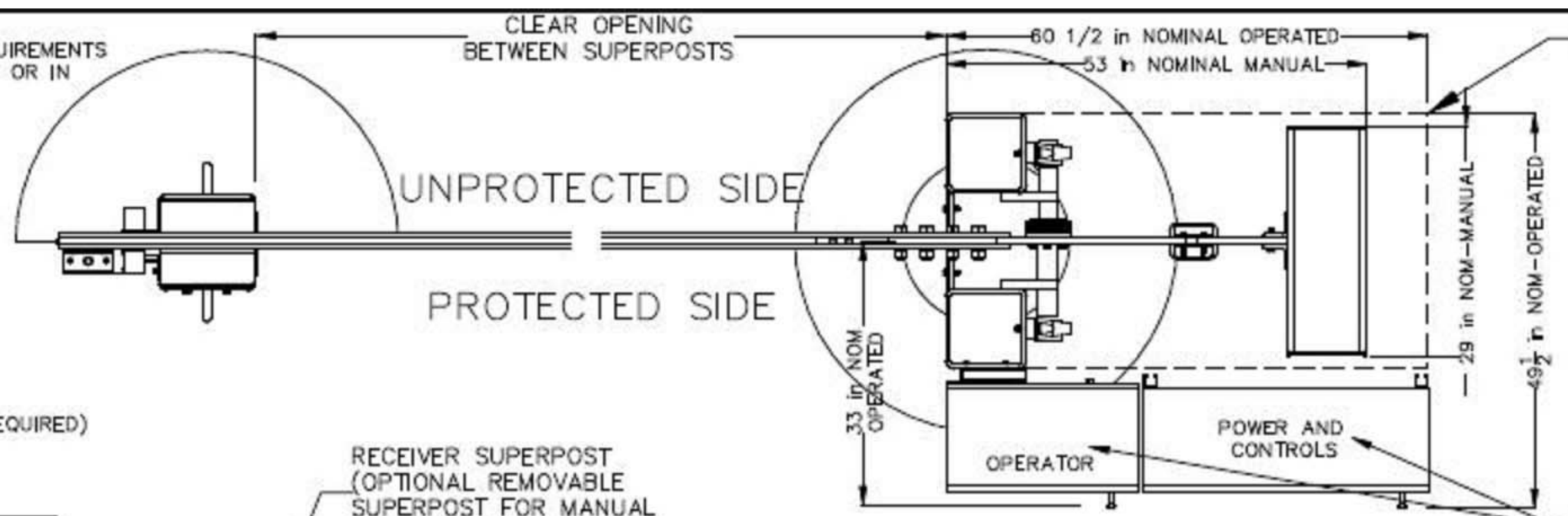


- NOTES:
1. DESIGNED TO CUSTOMER CRASH RATING REQUIREMENTS
 2. MAY BE INSTALLED OVER EXISTING ROADWAY OR IN NEW CONSTRUCTION
 3. ALL STEEL CONSTRUCTION, WELDING AND WELD INSPECTION BY AWS D1.1
 4. DROP ARM MAY BE OPERATED MANUALLY OR BY A REMOTELY CONTROLLED OPERATOR
 5. LOCAL OR REMOTE OPERATOR CONTROLS AVAILABLE
 6. DROP ARM MAY BE LOCKED IN POSITION
 7. FIELD ASSEMBLY BY BOLTED CONSTRUCTION

- PART DESCRIPTION
- 1 CRASH BEAM ASSEMBLY
 - 2 PIVOT SUPERPOST ASSEMBLY
 - 3 RECEIVER SUPERPOST ASSEMBLY
 - 4 COUNTERWEIGHT
 - 5 COUNTERWEIGHT PROTECTIVE COVER (IF REQUIRED)
 - 6 OPERATING UNIT (IF REQUIRED)



PREPARED BY	KUNEMAN	01FEB18
CHECKED BY	ANDERSON	01FEB18
DISCIPL. APPR.	ANDERSON	01FEB18
INTERFACE CK.		
BY	MLK	JWA
DATE	01FEB18	
REVISION	ORIGINAL ISSUE	

JOB NAME
DROP ARM GATE WITH OPERATOR AND CONTROLS
 CSP-DF 2.4.1.2

SHEET TITLE
PRODUCT ILLUSTRATION
LEFT HAND GATE SHOWN

JOB NO	1807-3	DATE	01FEB18
REV NO	0		
SCALE	NONE	DWG NO	SI002 A