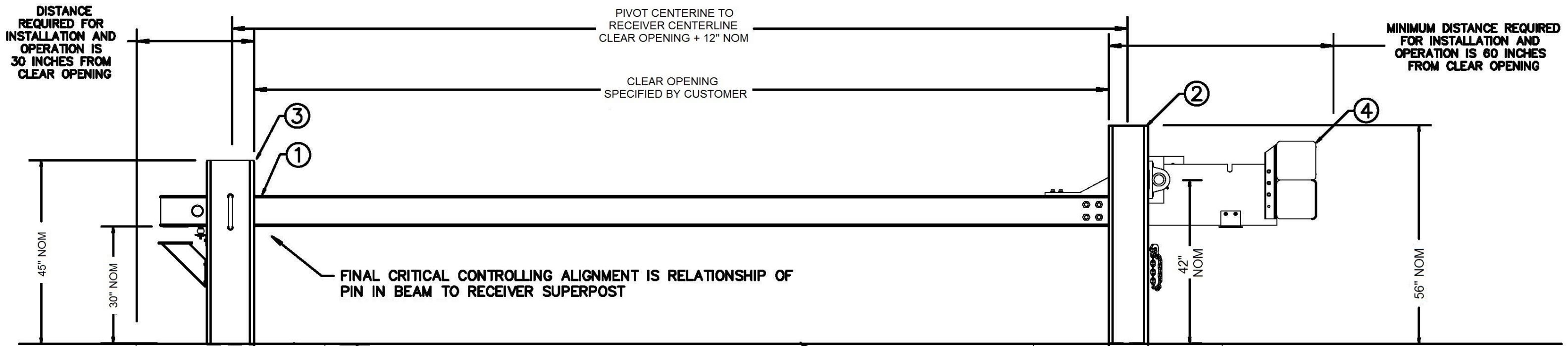


DISTANCE REQUIRED FOR INSTALLATION AND OPERATION IS 66 INCHES FROM ZERO LINE TO PROTECTED SIDE

DISTANCE REQUIRED FOR INSTALLATION AND OPERATION IS 24 INCHES FROM ZERO LINE TO UNPROTECTED SIDE



DISTANCE REQUIRED FOR INSTALLATION AND OPERATION IS 30 INCHES FROM CLEAR OPENING

PIVOT CENTERLINE TO RECEIVER CENTERLINE CLEAR OPENING + 12" NOM

CLEAR OPENING SPECIFIED BY CUSTOMER

MINIMUM DISTANCE REQUIRED FOR INSTALLATION AND OPERATION IS 60 INCHES FROM CLEAR OPENING

FINAL CRITICAL CONTROLLING ALIGNMENT IS RELATIONSHIP OF PIN IN BEAM TO RECEIVER SUPERPOST

FINISHED GRADE REFERENCE

CONCRETE ANCHORS MAY BE ROUND OR RECTANGULAR WITH REBAR - TYP 2 PLACES

PART DESCRIPTION	
1	DROP ARM ASSEMBLY
2	PIVOT SUPERPOST ASSEMBLY
3	RECEIVER SUPERPOST ASSEMBLY
4	COUNTERWEIGHT ASSEMBLY

ELEVATION VIEW

REBAR, CONDUIT, CONCRETE, AND INSTALLATION PROVIDED BY OTHERS

PREPARED BY	KUNEMAN	01FEB18
CHECKED BY	ANDERSON	01FEB18
DISCIPL APPR	ANDERSON	01FEB18
INTERFACE CK		
0	01FEB18	ORIGINAL ISSUE
NO	DATE	REVISION
BY	MLK	JWA
APPR	JWA	JWA
CLIENT APPR	PM	APPR



JOB NAME	DROP ARM GATE MANUAL OPERATION
	CSP-DF 2.4.3.2

SHEET TITLE	PRODUCT ILLUSTRATION RIGHT HAND UNIT SHOWN
-------------	---

JOB NO	1807-3	DATE	01FEB18
		REV NO	0
SCALE	NONE	DWG NO	SI002